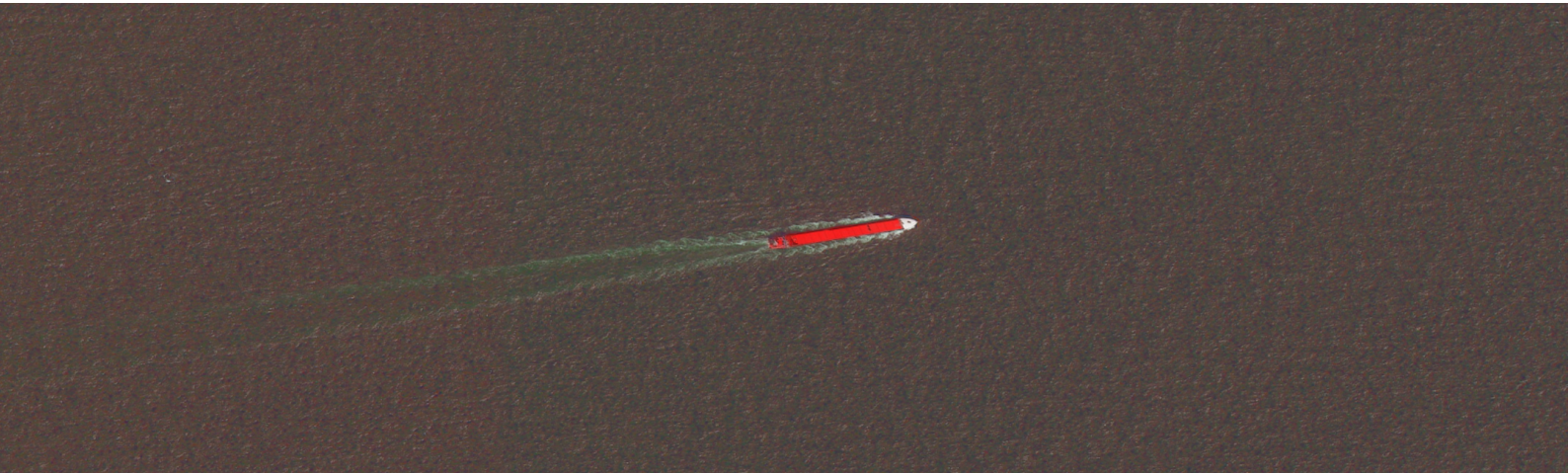




USE CASE



GERMAN WATERWAYS POLICE – SUPPORT TO INVESTIGATIONS ON ILLEGAL SHIP BREAKING

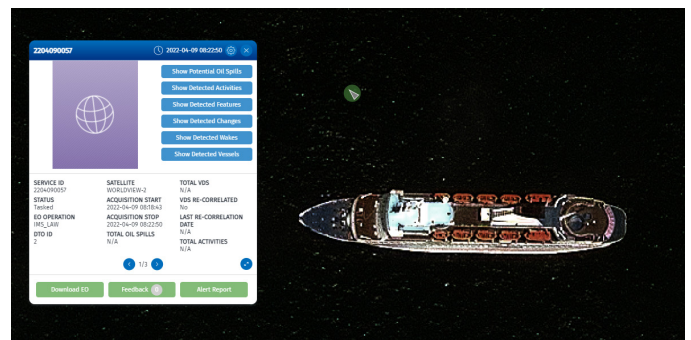
The German Waterways Police (DEWP) acts as the law enforcement body of the Joint Emergency Reporting and Assessment Centre for the Sea, which forms part of the Maritime Safety and Security Centre of the German Federal Government and the Coastal States.

In March 2022, one month after its sale by an EU Member State owner was announced, a cruise ship left an EU port and stopped transmitting its AIS signal, DEWP initiated an investigation related to potential violations of EU regulations governing waste shipments (1013/2006) and ship recycling (1257/2013).

Under new investigated ship data (name, flag, MMSI number and IMO number) and using CMS optical products and EMSA's vessel traffic data, DEWP traced the vessel's course from its initial departure point within the EU to the sea area off Gadani (Pakistan), approximately 100 nautical miles before a shipbreaking beach, where it stopped transmitting AIS data again.



The ship was tracked to Gadani coastline in Pakistan, approx. 100nm from a shipbreaking beach



The ship changed its information several times after leaving the EU port

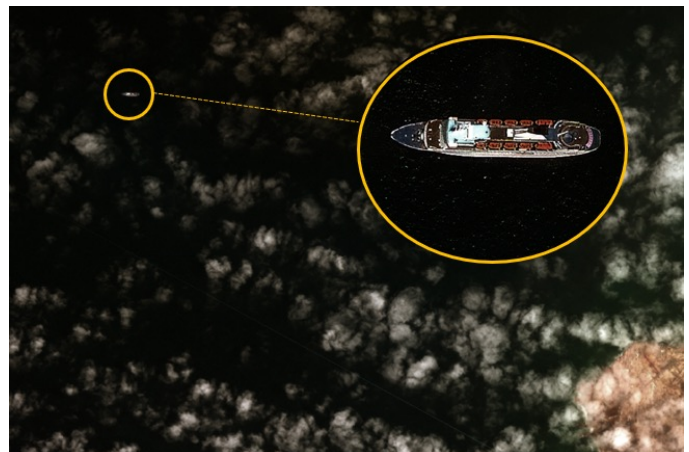
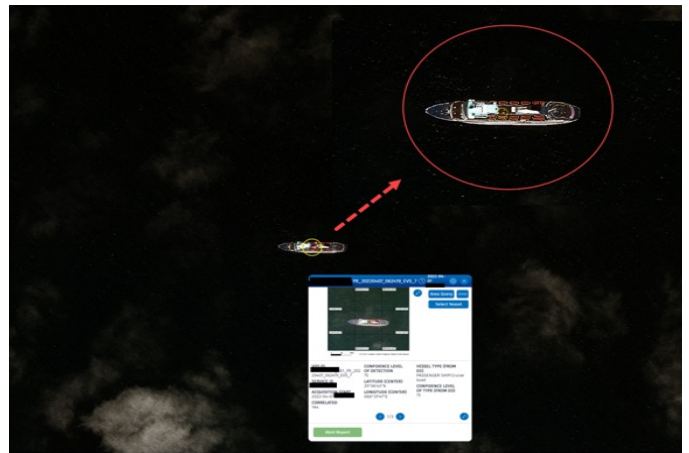


USE CASE

To further support the investigation, optical CMS satellite images for the area of Gadani were requested from EMSA, with an area of interest (AOI) covering the area between the vessel's last transmitted AIS and the anchorages off the Gadani wrecking beaches. A vessel with new ship data (name, flag and MMSI number) was detected and, after further verification, revealed to be the same vessel having left the EU port.

Despite the fact that ship data and ownership had changed twice during its course, the use of CMS optical products and EMSA's vessel traffic data provided key information for detection, identification of the target and helped to gather enough evidence for an investigation and a criminal procedure to be conducted.

Copernicus is the Earth Observation component of the European Union's Space programme which looks at our planet and its environment for the benefit of all European citizens. It offers information services that draw from satellite Earth Observation and in-situ (non-space) data. The European Maritime Safety Agency (EMSA) is the Entrusted Entity responsible for implementing the Copernicus Maritime Surveillance service on behalf of the European Commission (DG-DEFIS).



CMS/IMS proved key in detecting and identifying the vessel of interest

emsa.europa.eu/copernicus

Get in touch for more information

Copernicus Maritime Surveillance Service

Twitter CopernicusCMS / Instagram CopernicusCMS
copernicus@emsa.europa.eu

Copernicus

Twitter CopernicusEU / Facebook CopernicusEU

European Maritime Safety Agency

LinkedIn EMSA / Twitter/X EMSA_EU
Facebook EMSA / Instagram EMSA
emsa.europa.eu

CREDITS

Header image: © European Maritime Safety Agency, contains modified WorldView 2 data, (2023). © (2023) European Space Imaging / Maxar Technologies | © EMSA Services 2022 | © (2022) European Space Imaging / Maxar Technologies

This document was produced with funding by the European Union. Views and Opinions expressed are however those of the author only and the European Commission cannot be held responsible for any use which may be made of the information contained therein.